

# BUSINESS CONTINUITY PLAN

## FOR FEERING COFE PRIMARY SCHOOL (ASAT)



	NAME	CONTACT DETAILS
EXECUTIVE HEADTEACHER	Bridgette Gough	01787 475699 head@st-andrewscofe.com
DEPUTY HEADTEACHER	Ruth Ship - Feering	01376 570296 <a href="mailto:admin@feering.essex.sch.uk">admin@feering.essex.sch.uk</a>
CHAIR OF THE TRUST	Mike Gee	mgee@asat-cofe.com
<p>Date: ..... Signed: .....</p>		

Detailing arrangements for :

- Incident Management
- Buisness Continuity
- Recovery and Resumption of Normal School Activities

# Table of Contents

Section	Content	Page No.
<b>1.0</b>	<b>About this Plan</b>	
1.1	Document Control	
1.2	Plan Purpose	
1.3	Plan Remit	
1.4	Plan Owner	
1.5	Plan Distribution	
1.6	Plan Storage	
1.7	Plan Review Schedule	
<b>2.0</b>	<b>Plan Activation</b>	
2.1	Circumstances	
2.2	Responsibility for Plan Activation	
2.3	Escalating a Serious Incident to Essex County Council	
2.4	Activation Process	
<b>3.0</b>	<b>Roles and Responsibilities</b>	
3.1	School Incident Management Team	
3.2	Additional Response and Recovery Roles	
3.3	The Role of Governors	
<b>4.0</b>	<b>Incident Management</b>	
4.1	Purpose of the Incident Management Phase	
4.2	Incident Management Actions	
<b>5.0</b>	<b>Business Continuity</b>	
5.1	Purpose of the Business Continuity Phase	
5.2	Business Continuity Actions	
5.3	Business Continuity Strategies	
<b>6.0</b>	<b>Recovery and Resumption</b>	
6.1	Purpose of the Recovery and Resumption Phase	
6.2	Recovery and Resumption Actions	
<b>7.0</b>	<b>Appendices</b>	
A	Log Template	
B	Impact Assessment Form	
C	School Incident Action Plan	
D	List of First Aiders	
E	Checklist for Critical Incident Management Plan	
F	Lost Property Form	
G	Financial Expenditure Log	
H	Contents of Emergency Box / 'Grab bag'	
I	Risk Identification, Evaluation and Management Matrix	
J	Incident Management Decision-Making Tool	
K	Staff Contact List	
L	Key Contacts List	

M	Supplier List	
---	---------------	--

# 1.0 About this Plan

## 1. Document Control

Date	Revision/Amendment Details & Reason	Author

## 2. Plan Purpose

To provide a flexible response so that All Saints Academy Trust can:

- Respond to a disruptive incident (incident management)
- Maintain delivery of critical activities during an incident (business continuity)
- Return to 'business as usual' (resumption and recovery)

Examples of critical incidents impacting on schools include:

- Death or serious injury of a pupil/ member of staff in school or on a school trip
- Child protection incident
- Events which result in higher than normal absences
- Major fire
- Building collapse
- Natural disaster, such as flooding
- Missing person(s)/abductions
- Intense media interest

## 3. Plan Scope

The following are covered by this Plan:

- teaching
- learning support
- pastoral care in the school environment
- midday supervision
- school administration
- catering
- out of hours clubs
- school trips
- lettings
- governance

The following premises are covered by this Plan:

- Feering CofE Primary School building and play areas

## 1.4

### Revision amendments

Version	Amendments	Date

## 1.5 Plan Owner

The School Business Manager is this Plan's Owner and is responsible for ensuring that it is maintained, exercised and updated in accordance with School Policy for reviewing business continuity / emergency / critical incident / response plans.

## 1.6 Plan Distribution

This Business Continuity Plan is distributed as follows:

NAME	ROLE	ISSUE DATE	PLAN REF NO
Bridgette Gough	Headteacher	1.2.2021	
Ruth Ship	Deputy Headteacher	1.2.2021	
Ben Sutcliffe	Assistant Headteacher	1.2.2021	
Irene Jones	SLT	1.2.2021	
Debbie Hill	School Business Manager	1.2.2021	
Chris McLelland	Caretaker	1.2.2021	
Emma Stephens	School Office	1.2.2021	
Mike Gee	Chair of Trustees	1.2.2021	

## 1.7 Plan Storage

All parties on the distribution list above, are required to **safely** and **confidentially** store a copy of this plan at their regular place of work **and** off-site i.e. at home/ in vehicles (if appropriate) / in grab bags.

## 1.8 Plan Review Schedule

This Plan will be updated as required and formally reviewed in line with the School's review timetable.

When	By	Date completed
Every three years	School Business Manager	1 <sup>st</sup> February 2021

## 2.0 Plan Activation

### 2.1 Circumstances

This Plan will be activated in response to an incident causing significant disruption to the School, particularly the delivery of key/critical activities.

Examples of circumstances triggering activation of this Plan include:

- Loss of key staff or skills e.g. above normal levels of absenteeism due to illness or other scenarios such as severe weather, transport disruption
- Loss of critical systems e.g. ICT failure, power outage
- Denial of access, or damage to, facilities e.g. loss of a building through fire or flood, an external emergency with the School in the Emergency Service's cordon preventing access, School facilities in use for General/Local Elections, severe weather scenarios or utilities failure
- Loss of a key resource e.g. an external supplier/partner vital to the delivery of a critical school activity such as catering provider or providers of transport e.g. for SEN pupils

### 2.2 Responsibility for Plan Activation

The Head Teacher or a member of the nominated **School Incident Management Team**<sup>1</sup> will normally activate and stand down this Plan.

### 2.3 Escalating a Serious/Critical Incident

All serious incidents or incidents affecting the physical infrastructure of the school should be reported to Essex County Council via the two numbers listed below

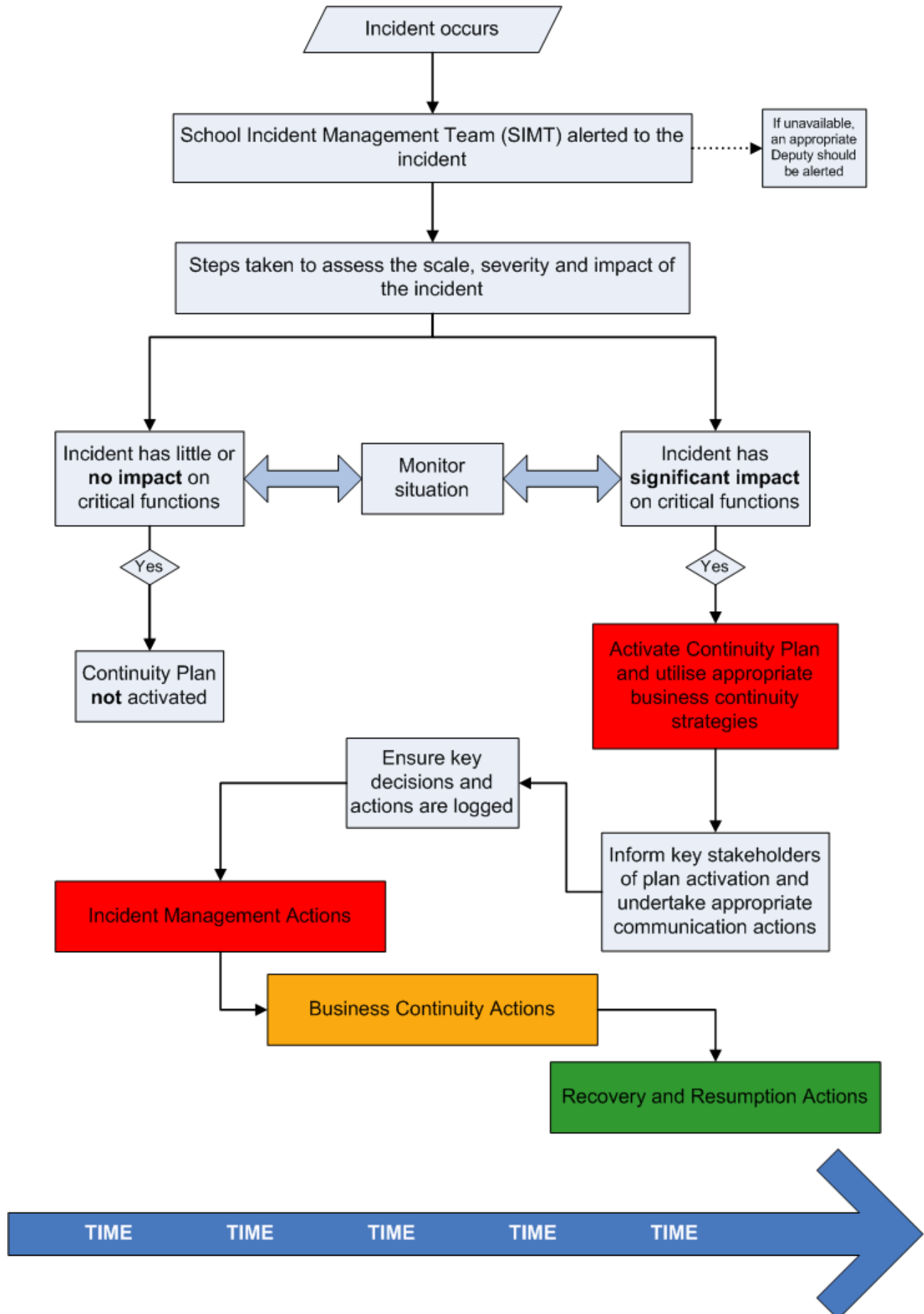
Schools Communications Team Email: <a href="mailto:schools.communication@essex.gov.uk">schools.communication@essex.gov.uk</a>	01245 434745	Office Hours (9am – 5pm)
Emergency Duty Service (EDS)	0345 6061212	Out of Hours (5pm – 9am) and at weekends and Bank Holidays

If the incident is deemed to be of a 'critical' nature, the Incident Management Plan will be activated and other Council Services as well as the Department of Education should be notified to respond as appropriate.

---

<sup>1</sup> See Section 3.1 for the responsibilities for your School Incident Management Team  
Feering CofE Primary School BC Plan, version 1 Page 6 of 41

## 2.4 Activation Process



## 3.0 Roles and Responsibilities

### 3.1 School Incident Management Team

Role	Responsibilities	Accountability / Authority
Headteacher	<ul style="list-style-type: none"><li>▪ Senior responsible owner of Business Continuity Management in the School</li><li>▪ Ensuring the School has capacity within it's structure to respond to incidents</li><li>▪ Determining the School's overall response and recovery strategy</li><li>▪ Business Continuity Plan development</li><li>▪ Developing continuity arrangements and strategies e.g. alternative relocation site, use of temporary staff etc</li><li>▪ Involving the School community in the planning process as appropriate</li><li>▪ Plan testing and exercise</li><li>▪ Conducting 'debriefs' following an incident, test or exercise to identify lessons and ways in which the plan can be improved</li><li>▪ Training staff within the School on Business Continuity</li><li>▪ Embedding a culture of resilience within the School, involving all staff and pupils</li></ul>	The Headteacher has overall responsibility for day-to-management of the School, including lead decision-maker in times of crisis.
School Incident Management Team <i>(including Headteacher &amp; Business Continuity Co-ordinator)</i>	<ul style="list-style-type: none"><li>▪ Leading the School's initial and ongoing response to an incident</li><li>▪ Declaring that an 'incident' is taking place</li><li>▪ Activating the Business Continuity Plan</li><li>▪ Notifying relevant stakeholders of the incident, plan activation and ongoing response actions</li><li>▪ Providing direction and leadership for the whole School community</li><li>▪ Undertaking response and communication actions as agreed in the plan</li><li>▪ Prioritising the recovery of key activities disrupted by the incident</li><li>▪ Managing resource deployment</li><li>▪ Welfare of Pupils</li><li>▪ Staff welfare and employment issues</li></ul>	The School Incident Management Team has the delegated authority to authorise all decisions and actions required to respond and recover from the incident.



The following Staff have been identified as the School's Incident Management Team:

<b>Role</b>	<b>Name</b>	<b>Telephone No.</b>
Headteacher – Lead the action plan	Bridgette Gough	07939 435931
Liaison with Essex LA Monitor and review procedures and actions Liaise with Press	Mike Gee	07788 218046
Support the Head in leading the action plan	Ruth Ship	
Inform all staff of incident – Communications. Identify vulnerable individuals (students and staff)	Ben Sutcliffe	07900 257899
Oversee safety of children KS2	Irene Jones	07748 218967
Oversee safety of children KS1	Irene Jones	07748 218967
Oversee safety of staff/visitors	Emma Stephens	XXXX

See appendix C for list of specific duties, Immediate Action Plan and List of First Aiders

### 3.2 Additional Response and Recovery Roles

Depending on the circumstances of the incident, it may be necessary to activate one or all of the roles described below.

<b>Role</b>	<b>Responsibilities</b>	<b>Accountability / Authority</b>
Incident Loggist (record keeper)	<ul style="list-style-type: none"> <li>Ensuring that all key decisions and actions taken in relation to the incident are recorded accurately</li> </ul>	Reporting directly to the Headteacher or School Incident Management Team.
Media Coordinator	<ul style="list-style-type: none"> <li>Collating information about the incident for dissemination in Press Statements</li> <li>Liaison with Essex County Council's Press Office to inform media strategy</li> </ul>	The Media Co-ordinator should assist with providing information to the Press Office but should not undertake direct contact with Media.
Stakeholder Liaison	<ul style="list-style-type: none"> <li>Co-ordinating communication with key stakeholders as necessary. This includes (but does not cover all):               <ul style="list-style-type: none"> <li>Governors</li> <li>Parents/Carers/carers</li> <li>Key Essex County Council Services</li> </ul> </li> </ul>	All communications activities should be agreed by the School Incident Management Team. Information sharing should be approved by the Headteacher (or School Incident Management Team

	<ul style="list-style-type: none"> <li>○ School Crossing Patrol</li> <li>○ School Transport Providers</li> <li>○ External agencies e.g. Emergency Services, Health and Safety Executive (HSE) etc</li> </ul>	if the Headteacher is unavailable).
Facilities Manager	<ul style="list-style-type: none"> <li>▪ Undertaking duties as necessary to ensure site security and safety in an incident</li> <li>▪ Liaison with the School Incident Management to advise on any issues relating to the school physical infrastructure</li> <li>▪ Lead point of contact for any Contractors who may be involved in incident response</li> </ul>	Reporting directly to the Headteacher or School Incident Management Team.
ICT Coordinator	<ul style="list-style-type: none"> <li>▪ Ensuring the resilience of the School's ICT infrastructure</li> <li>▪ Liaison with Essex County council ICT support or external providers (if applicable)</li> <li>▪ Work with the Business Continuity Coordinator to develop proportionate risk responses</li> </ul>	ICT Coordinator reports directly to the Business Continuity Coordinator for plan development issues. In response to an incident, reporting to the School Incident Management Team.
Recovery Coordinator (Chair of Governors)	<ul style="list-style-type: none"> <li>▪ Leading and reporting on the School's recovery process</li> <li>▪ Identifying lessons as a result of the incident</li> <li>▪ Liaison with Business Continuity Coordinator to ensure lessons are incorporated into the plan development</li> </ul>	Is likely to already be a member of the School Incident Management Team, however will remain focussed on leading the recovery and resumption phase. Reports directly to Headteacher.

The following School staff have been identified as people who may be able to undertake additional roles in your response to an incident:

Name	Role	Contact Details
Mark Fuller	ICT Coordinator	01376 556360

### 3.3 The Role of Trustees

Role	Responsibilities	Accountability / Authority
Board of Trustees	<ul style="list-style-type: none"> <li>▪ Working in partnership with the Headteacher to provide strategic direction in planning for and responding to disruptive incidents</li> <li>▪ Undertaking actions as required to support the School's response to a disruptive incident and subsequent recovery</li> <li>▪ Acting as a 'critical friend' to ensure that the School Business Continuity Plan is fit-for-purpose and continuity arrangements are robust and reliable</li> <li>▪ Monitoring and evaluating overall performance in developing School Resilience and reporting to Parents/Carers</li> </ul>	<p>Liaison with the Headteacher or School Incident Management Team in response to a crisis.</p> <p>Reporting progress in developing Business Continuity Plans to Parents/Carers</p>

## 4.0 Incident Management

Turn immediately to Section 5.0 for pre-planned incidents or slowly developing scenarios that are not 'no notice' emergencies but have the potential to disrupt School activities e.g. computer virus, flu pandemics, a pre - planned strike, forecast for heavy snow or a power outage etc

### 4.1 Purpose of the Incident Management Phase

The purpose and priorities for this phase are to:

- Protect the safety and welfare of pupils, staff, visitors and the wider community
- Protect vital assets e.g. equipment, data, reputation
- Ensure urgent and necessary communication takes place
- Support the Business Continuity phase
- Support the Recovery and Resumption phase

### 4.2 Incident Management Actions

	ACTION	FURTHER INFO/DETAILS	ACTIONED? (tick/cross as appropriate)
1.	Make a <i>quick</i> initial assessment: <ul style="list-style-type: none"><li>▪ Survey the scene</li><li>▪ Assess (i.e. scale/severity, duration &amp; impact)</li><li>▪ Disseminate information (to others)</li></ul>	Gather and share information to facilitate decision-making and enhance the response  <i>A full impact assessment form can be found in Appendix A</i>	<input type="checkbox"/>
2.	Call the Emergency Services (as appropriate)	<b>TEL: 999</b> Provide as much information about the incident as possible	<input type="checkbox"/>
3.	<ul style="list-style-type: none"><li>▪ Evacuate the School building, if necessary.</li><li>▪ Consider whether it may be safer or better for the welfare of pupils to stay within the School premises and congregate at a relative place of safety indoors.</li><li>▪ If there is time and it is safe to do so, consider the recovery of vital assets/equipment to enable delivery of critical School activities</li><li>▪ Notify relevant stakeholders of site evacuation</li></ul>	<ul style="list-style-type: none"><li>▪ Use normal fire evacuation procedures for the School</li><li>▪ Consider arrangements for staff/pupils with special needs</li><li>▪ If the decision is to stay within the School, ensure the assembly point is safe and take advice from Emergency Services as appropriate.</li><li>▪ Office Manager to exit with 'Grab Bag' – See contents list (Appendix H)</li></ul>	<input type="checkbox"/>

	ACTION	FURTHER INFO/DETAILS	ACTIONED? (tick/cross as appropriate)
4.	Ensure all Pupils, Staff and any School Visitors report to the identified Assembly Point.	The normal <b>Assembly point</b> for the School is: the front school field and back playground.  The <b>alternative Assembly Point</b> for the school is: The Ramsey field	<input type="checkbox"/>
5.	Check that all Pupils, Staff, Contractors and any Visitors have been evacuated from the building and are present. Consider the safety of all pupils, staff, contractors and Visitors as a priority	Use all the sign in books for <ul style="list-style-type: none"> <li>• Staff</li> <li>• Governors</li> <li>• Visitors</li> <li>• Staff in/out board</li> <li>• Pupil contact folders for each year group.</li> </ul>	<input type="checkbox"/>
6.	Ensure appropriate access to site for Emergency Service vehicles	Ensure any required actions are safe by undertaking a dynamic risk assessment	<input type="checkbox"/>
7.	Establish a contact point for all supporting personnel	Consider the availability of staff and who may be best placed to communicate information	<input type="checkbox"/>
8.	Identify School Incident Management Team to undertake specific emergency response roles	<i>Information on roles and responsibilities can be found in Section 3.0</i>	<input type="checkbox"/>
9.	Ensure a log of key decisions and actions is started and maintained throughout the incident	<i>The Log template can be found in Appendix A</i>	<input type="checkbox"/>
10.	Where appropriate, record names and details of any staff, contractors or visitors who may have been injured or affected by the incident as part of your incident record keeping	This information should be held securely as it may be required by Emergency Services or other agencies either during or following the incident	<input type="checkbox"/>
11.	<ul style="list-style-type: none"> <li>▪ Take further steps to assess the impact of the incident</li> <li>▪ Agree response / next steps</li> </ul>	Continue to record key decisions and actions in the incident log <i>The impact assessment form can be found in Appendix B.</i>	<input type="checkbox"/>
12.	Log details of all items lost by Pupils, Staff, Visitors etc as a result of the incident, if appropriate	<i>A form for recording this information is in Appendix C</i>	<input type="checkbox"/>

	ACTION	FURTHER INFO/DETAILS	ACTIONED? (tick/cross as appropriate)
13.	Consider the involvement of other Teams, Services or Organisations who may be required to support the management of the incident in terms of providing additional resource, advice and guidance	Depending on the incident, the following Teams in ECC may be approached to assist with incident management: <ul style="list-style-type: none"> <li>▪ Essex HR – if a counselling service is required for anyone within the schools community</li> <li>▪ Health and Safety Advisory service</li> <li>▪ Emergency Planning Officer</li> <li>▪ Executive Director</li> <li>▪ Cabinet member</li> </ul>	<input type="checkbox"/>
14.	If appropriate, arrange contact with the Council Press Office via Management Support for Schools.	Establish a media area if necessary.	
15.	Assess the key priorities for the remainder of the working day and take relevant action	Consider actions to ensure the health, safety and well-being of the School community at all times. Consider your business continuity strategies i.e. alternative ways of working, re-location to your recovery site etc to ensure the impact of the disruption is minimised. <i>Business Continuity Strategies are documented in Section 5.3</i>  Consider the School's legal duty to provide free school meals and how this will be facilitated, even in the event of emergency school closure.	<input type="checkbox"/>
16.	Ensure Staff are kept informed about what is required of them	Consider: <ul style="list-style-type: none"> <li>▪ what actions are required</li> <li>▪ where staff will be located</li> <li>▪ Notifying Staff who are not currently in work with details of the incident and actions undertaken in response</li> </ul>	<input type="checkbox"/>
17.	Ensure Pupils are kept informed as appropriate to the circumstances of the incident	Consider communication strategies and additional support for pupils with special needs. Consider the notification of pupils not currently in school i.e. <ul style="list-style-type: none"> <li>▪ update website</li> <li>▪ send text message to all parents</li> <li>▪ email parents who have supplied an email address.</li> </ul>	<input type="checkbox"/>

	ACTION	FURTHER INFO/DETAILS	ACTIONED? (tick/cross as appropriate)
18.	Ensure Parents/Carers are kept informed as appropriate to the circumstances of the incident. Parents/carers of those immediately affected by the incident will require additional considerations to ensure information is accurate and up-to-date.	Agree arrangements for parents/carers collecting pupils at an appropriate time Consider how emergency communication needs will be established <ul style="list-style-type: none"> <li>▪ update answerphone</li> <li>▪ update website daily</li> <li>▪ send text message to alert parents to crucial up-to-date information</li> <li>▪ email parents (who have supplied an email address) to alert them to crucial information.</li> </ul>	<input type="checkbox"/>
19.	Ensure Trustees are kept informed as appropriate to the circumstances of the incident	Send out a daily email to staff and Trustees.	<input type="checkbox"/>
20.	Consider the wider notification process and the key messages to communicate	Inform Essex radio and speak to the local Newspaper e.g. the Evening Echo. Depending on the nature of the incident inform local television (speak to Communications team at Essex County Council beforehand).	<input type="checkbox"/>
21.	Communicate the interim arrangements for delivery of critical School activities	Ensure all stakeholders are kept informed of contingency arrangements as appropriate Send out a daily email to staff and Trustees. Update the school website daily.	<input type="checkbox"/>
22.	Log all expenditure incurred as a result of the incident	Record all costs incurred as a result of responding to the incident <i>The Financial Expenditure Log can be found in Appendix D</i>	<input type="checkbox"/>
23.	Seek specific advice/ inform your Insurance Company as appropriate	Insurance Policy details can be found filed in the Insurance documents file on the book shelf of the Admin Office.	<input type="checkbox"/>
24.	Ensure recording process in place for staff/pupils leaving the site	Ensure the safety of staff and pupils before they leave site and identify suitable support and risk control measures as required	<input type="checkbox"/>

## 5.0 Business Continuity

### 5.1 Purpose of the Business Continuity Phase

The purpose of the business continuity phase of your response is to ensure that critical activities are resumed as quickly as possible and/or continue to be delivered during the disruption. This may involve activation of one or more of your business continuity strategies to enable alternative ways of working. During an incident it is unlikely that you will have all of your resources available to you, it is therefore likely that some 'non critical' activities may need to be suspended at this time.

### 5.2 Business Continuity Actions

	ACTION	FURTHER INFO/DETAILS	ACTIONED? (tick/cross as appropriate)
1.	Identify any other stakeholders required to be involved in the Business Continuity response	Depending on the incident, you may need additional/specific input in order to drive the recovery of critical activities, this may require the involvement of external partners	<input type="checkbox"/>
2.	Evaluate the impact of the incident	<p>Take time to understand the impact of the incident on 'business as usual' School activities by communicating with key stakeholders to gather information.</p> <p>Consider the following questions:</p> <ul style="list-style-type: none"><li>▪ Which School activities are disrupted?</li><li>▪ What is the impact over time if these activities do not continue?</li><li>▪ Would the impact be:<ul style="list-style-type: none"><li>○ Manageable? <input type="checkbox"/></li><li>○ Disruptive? <input type="checkbox"/></li><li>○ Critical? <input type="checkbox"/></li><li>○ Disastrous? <input type="checkbox"/></li></ul></li><li>▪ What are current staffing levels?</li><li>▪ Are there any key deadlines approaching?</li><li>▪ What are your urgent recovery objectives?</li><li>▪ What resources are required to recover your critical activities?</li></ul>	<input type="checkbox"/>



	<b>ACTION</b>	<b>FURTHER INFO/DETAILS</b>	<b>ACTIONED? (tick/cross as appropriate)</b>
3.	Plan how critical activities will be maintained, utilising pre-identified or new business continuity strategies (See Section 5.3)	Consider: <ul style="list-style-type: none"> <li>▪ Immediate priorities</li> <li>▪ Communication strategies</li> <li>▪ Deployment of resources</li> <li>▪ Finance</li> <li>▪ Monitoring the situation</li> <li>▪ Reporting</li> <li>▪ Stakeholder engagement</li> </ul> Produce an action plan for this phase of response.	<input type="checkbox"/>
4.	Log <b>all</b> decisions and actions, including what you decide <b>not</b> to do and include your decision making rationale	Use the Decision and Action Log to do this. <i>The log template can be found in Appendix A</i>	<input type="checkbox"/>
5.	Log all financial expenditure incurred	<i>The Financial Expenditure Log can be found in Appendix D</i>	<input type="checkbox"/>
6.	Allocate specific roles as necessary	Roles allocated will depend on the nature of the incident and availability of staff	<input type="checkbox"/>
7.	Secure resources to enable critical activities to continue/be recovered	Consider requirements such as staffing, premises, equipment, ICT, welfare issues etc	<input type="checkbox"/>
8.	Deliver appropriate communication actions as required	Ensure methods of communication and key messages are developed as appropriate to the needs of your key stakeholders e.g. Staff, Parents/Carers, Trustees, Suppliers, Local Authority, Central Government Agencies etc.	<input type="checkbox"/>

## 5.3 Business Continuity Strategies

	<b>Arrangements to manage a loss or shortage of Staff or skills</b>	<b>Further Information</b> (e.g. Key contacts, details of arrangements, checklists)
1.	Use of temporary staff e.g. Supply Teachers, Office Staff etc	Use of HLTA's – covered in house. Use of Agency Staff via St Andrews Primary School 01787 475699
2.	Multi-skilling and cross-training to ensure staff are capable of undertaking different roles and responsibilities, this may involve identifying deputies, job shadowing, succession planning and handover periods for planned (already known) staff absence e.g. maternity leave	On-going – SLT development as SIP – 2 Assistant HT's – NPQH 18-19. Middle Leader – NPQHL 18-19
3.	Using different ways of working to allow for reduced workforce, this may include: <ul style="list-style-type: none"> <li>• Larger class sizes (subject to adult to child ratios)</li> </ul>	1 HLTA in school Use of part-time teaching staff for emergencies.

	<ul style="list-style-type: none"> <li>• Use of Teaching Assistants, Student Teachers, Learning Mentors etc</li> <li>• Virtual Learning Environment opportunities</li> <li>• Pre-prepared educational materials that allow for independent learning</li> <li>• Team activities and sports to accommodate larger numbers of pupils at once</li> </ul>	3 Teachers. Use of shared staff from St Andrews - SENCo
4.	Suspending 'non critical' activities and focusing on your priorities	✓
5.	Using mutual support agreements with other Schools	Link with St Andrews
6.	Ensuring Staff management issues are considered i.e. managing attendance policies, job description flexibility and contractual requirements etc	✓

	<b>Arrangements to manage denial of access to your premises or loss of utilities</b>	<b>Further Information</b> (e.g. Key contacts, details of arrangements, checklists)
1.	Localising the incident e.g. isolating the problem and utilising different sites or areas within the School premises portfolio	Able to relocate/isolate classrooms. Emergency tape etc.
2.	Using mutual support agreements with other Schools	Link with St Andrews
3.	Pre-agreed arrangements with other premises in the community i.e. Libraries, Leisure Centres, Colleges, University premises	
4.	Virtual Learning Environment opportunities	
5.	Off-site activities e.g. swimming, physical activities, school trips	Contact with staff managing trip/swim to be made. Mobile numbers part of Risk Assessment.

	<b>Arrangements to manage loss of technology / telephony / data / power</b>	<b>Further Information</b> (e.g. Key contacts, details of arrangements, checklists)
1.	Back-ups of key school data e.g. CD or Memory Stick back-ups, photocopies stored on and off site, mirrored servers etc	A back up from the previous evening of all servers is stored offsite.
2.	Reverting to paper-based systems e.g. paper registers, whiteboards etc	✓
3.	Flexible lesson plans	✓
4.	Emergency power e.g. Uninterruptible Power Supply (UPS), generator	Alternative provision in place-Dale Hire
5.	Emergency lighting	In Place – lasts for required minimum

	<b>Arrangements to mitigate the loss of key suppliers, third parties or partners</b>	<b>Further Information</b> (e.g. Key contacts, details of arrangements, checklists)
1.	Pre-identified alternative suppliers	In place
2.	Ensuring all external providers have business continuity plans in place as part of contract terms	TCS ICT – covered
3.	Insurance cover	Zurich Policy No. KSC-242095-0853 01252 387 8083
4.	Using mutual support agreements with other Schools	Ramsey Academy St Andrews Primary School
5.	Using alternative ways of working to mitigate the loss e.g. suspending activities, adapting to the situation and working around it	School Closure Procedures Using remote access to: ParentMail, From any location log-in Office Manager/EHT

## 6.0 Recovery and Resumption

### 6.1 Purpose of the Recovery and Resumption Phase

The purpose of the recovery and resumption phase is to resume 'business as usual' working practises for the School as quickly as possible. Where the impact of the incident is prolonged, 'normal' operations may need to be delivered under new circumstances e.g. from a different location.

### 6.2 Recovery and Resumption Actions

	ACTION	FURTHER INFO/DETAILS	ACTIONED? (tick/cross as appropriate)
1.	Agree and plan the actions required to enable recovery and resumption of normal working practises	Agreed actions will be detailed in an action plan and set against timescales with responsibility for completion clearly indicated.	<input type="checkbox"/>
2.	Respond to any ongoing and long term support needs of Staff and Pupils	Depending on the nature of the incident, the School Incident Management Team may need to consider the use of Counselling Services	<input type="checkbox"/>
3.	Once recovery and resumption actions are complete, communicate the return to 'business as usual'.	Ensure all staff are aware that the business continuity plan is no longer in effect. Ring staff using staff contact list. Text and email parents – update the website.	<input type="checkbox"/>
4.	Carry out a 'debrief' of the incident with Staff (and possibly with Pupils). Complete a report to document opportunities for improvement and any lessons identified	The incident de-brief report should be reviewed by all members of the School Incident Management Team and in particular by the Business Continuity Coordinator to ensure key actions resulting from the incident are implemented within designated timescales. Governors may also have a role in monitoring progress in completing agreed actions to further develop the resilience of the School.	<input type="checkbox"/>
5.	Review this Continuity Plan in light of lessons learned from incident and the response to it	Implement recommendations for improvement and update this Plan. Ensure any revised versions of the Plan is read by all members of the Business Continuity Team	<input type="checkbox"/>

## 7.0 Appendices

	<b>Content</b>
A	Log Template
B	Impact Assessment Form
C	School Incident Action Plan
D	List of First Aiders
E	Checklist for Critical Incident Management Plan
F	Lost Property Form
G	Financial Expenditure Log
H	Contents of Emergency Box / 'Grab bag'
I	Risk Identification, Evaluation and Management Matrix
J	Incident Management Decision-Making Tool
K	Staff Contact List
L	Key Contacts List
M	Supplier List

## Log of Events, Decisions and Actions

[illegible]

Appendix B			
Impact Assessment Form			
Completed By		Incident	
Date		Time	

Question	Logged Response						
How were you made aware of the incident?							
What is the nature of the incident? (e.g. type, location & severity)							
Are there any staff or pupil casualties or fatalities? (Complete casualty / fatality sheets if needed)							
Have the Emergency Services been called?							
Is the incident currently affecting School activities? If so, which areas?							
What is the estimated duration of the incident?							
What is the actual or threatened loss of workforce?	<table border="1"> <tr> <td>Over 50%</td> <td><input type="checkbox"/></td> </tr> <tr> <td>20 – 50%</td> <td><input type="checkbox"/></td> </tr> <tr> <td>1 – 20%</td> <td><input type="checkbox"/></td> </tr> </table>	Over 50%	<input type="checkbox"/>	20 – 50%	<input type="checkbox"/>	1 – 20%	<input type="checkbox"/>
Over 50%	<input type="checkbox"/>						
20 – 50%	<input type="checkbox"/>						
1 – 20%	<input type="checkbox"/>						
Has access to the whole site been denied? If so, for how long? (provide estimate if not known)							
Which work areas have been destroyed, damaged or made unusable?							
Is there evidence of structural damage?							
Which work areas are inaccessible but intact?							

Question	Logged Response
Are systems and other resources unavailable? (include computer systems, telecoms, other assets)	
If so, which staff are affected by the ICT disruption and how?	
Have any utilities (gas, electricity or water) been affected?	
Is there media interest in the incident? (likely or actual)	
Does the incident have the potential to damage the School's reputation?	
Other Relevant Information	



## School Incident Action Plan

Examples of critical incidents impacting the school:

- Major Fire    Building Collapse    Natural Disaster    Terror Attack

### Immediate Action Plan:

Action	By Whom
Establish a basic overview of the incident	Bridgette Gough / Chris McLelland
Take immediate action to safeguard pupils, staff and visitors	School's Incident Management Team
Assign members of staff to relevant School Emergency Management Team (SIMT) roles	Confirm with staff but already in place
Contact Emergency Services	Ruth Ship
Ensure Safety of Children – KS1. Evacuate the building *relocate as necessary	Irene Jones
Ensure Safety of Children – KS2. Evacuate the building *relocate as necessary	Irene Jones
Ensure Safety of Staff/Visitors. Evacuate the building *relocate as necessary	Emma Stephens
Trigger support from LA - Contact ECC Communications Team/Emergency Duty Service	Mike Gee
Set up an incident management area and dedicated phone line for anxious parents	Emma Stephens / Chris McLelland
SLT to agree factual statement to avoid speculation	Bridgette Gough / Ruth Ship
Contact families affected	Ben Sutcliffe
Make arrangement to inform other parents	Emma Stephens
Inform pupils	Class Teachers
Inform anyone off site of situation if applicable	Chris McLelland
Deal with media	Mike Gee / Ruth Ship

## Appendix D

The following Staff are qualified to administer first aid:

Beryl Crockford	Louise Lucas
Tracy Bass	Sue Sharp
John Nicholls	Monica Steele
Sarah Camomile	
Jenny Gardiner	

## Appendix E: Checklist for Critical Incident Management Plan

### Initial Actions: Day 1

Action	Information, Notes & By Whom
<b><u>Gather and record accurate information</u></b>  <b>What</b> has happened? <b>Who</b> was involved? <b>When</b> did it happen? <b>How</b> did it happen?	<p>It is important to establish the facts otherwise rumours may take over and add to the distress of those involved. Specific details should include the names of everyone involved including any children/staff from other schools/settings.</p> <p><b>By Whom : Site Manager/Headteacher</b></p>
<b>Contact the affected family</b>  <ul style="list-style-type: none"> <li>• Find out their wishes</li> <li>• Establish clear line of communication</li> <li>• Plan further contact.</li> </ul>	<p>Contact should be made with family or families within the school community who are directly affected by the incident within 24 hours if possible. The nature of the contact should be guided by the wishes of the family although it may involve a home visit by staff representatives to extend sympathy. In some cases it may involve planning for return to school of bereaved children.</p> <p><b>By Whom : Headteacher</b></p>
<b><u>Assess the situation and provide immediate emergency response</u></b>	<p>When an incident takes place on or beside school premises an emergency response may involve: ensuring immediate safety of all students and adults; contacting emergency services; administering first aid.</p> <p><b>By Whom : Headteacher/Site Manager/Office Staff/First Aiders</b></p>
<b>Notify the Local Authority of Critical Incident via Schools Communication Team (01245 434745)</b>	<p>By calling this number the Schools Communication Team will run through for you the various Local Authority services that may be of use to you including the Critical Incident Team via the Educational Psychology Service.</p> <p><b>By Whom : Assistant Head Teacher</b></p>
<b><u>Ensure a dedicated emergency telephone line is operational</u></b>  .....	<p>During major incidents phone lines may become jammed. Agree on which phone line is to be kept open for outgoing and incoming emergency calls. Swap mobile phone numbers with key agencies.</p> <p><b>By Whom : Anyone involved with the incident</b></p>
<b>Contact school governors and outside agencies</b>	<p>An Emergency Contact List should be collated in advance and kept in an accessible location.</p> <p><b>By Whom : Office Staff</b></p>
<b>Alert the Media team</b>	<p>Support can be given by the press office on the preparation of an official statement. Individuals should be strongly discouraged from talking to the media as partial information, speculation and personal opinion can cause significant distress to families, especially when inaccurately reported; this is also true of information posted on social networking sites.</p> <p><b>By Whom : Headteacher</b></p>

<p><b>Convene a meeting to brief the Critical Incident Management Team to:</b></p> <ul style="list-style-type: none"> <li>• Brief the team</li> <li>• Make specific plans</li> <li>• Delegate roles and responsibilities</li> </ul>	<p>Depending on the incident it may be advisable to meet the evening before or early in the morning to ensure a plan is in place for the school day. At this meeting determine what information is to be shared beyond the group and with whom (in sensitive cases this may involve liaison with the family).</p> <p><b>By Whom : Headteacher / Senior Leadership Team</b></p>
<p><b>Establish procedure for informing/ briefing staff to</b></p> <ul style="list-style-type: none"> <li>• Inform about the incident</li> <li>• Discuss plans for the day</li> <li>• Discuss how to support students (and each other)</li> </ul>	<p>It is important that staff receive accurate facts and are kept updated. This may require two separate groups to allow supervision of students. The meeting would normally be led by the head teacher or senior member of staff. It may be helpful / appropriate for an EP, a member of the clergy or a police officer to have some input to this meeting. Staff should be given advice and share ideas on how best to support students during this time</p> <p><b>By Whom : Headteacher</b></p>
<p><b>Establish procedure for informing students</b></p> <ul style="list-style-type: none"> <li>• In groups</li> <li>• In a familiar environment</li> <li>• From people they know and trust</li> </ul>	<p>Whole school announcements should be avoided. Students should be informed in class or tutor groups by people they know and trust. Outside professionals can provide advice and support to staff where needed. Students who are likely to be particularly affected (e.g. close friends of a deceased pupil) should be told separately first.</p> <p><b>By Whom : Class Teacher</b></p>
<p><b>Compile a list of vulnerable students and adults</b></p>	<p>Vulnerable individuals (students and staff) need to be identified and monitored. Additional support may be put in place either from adults or peers. Staff can be reminded that their colleagues may need some additional support such as a phone call later that evening</p> <p><b>By Whom : SEN Lead / Emotional Support Leads / SLT</b></p>
<p><b>Plan adjustments to the day and in school support including</b></p> <ul style="list-style-type: none"> <li>• whole school activities</li> <li>• class/tutor group activities</li> <li>• quiet room with support</li> </ul>	<p>General principles include keeping routines as normal as possible; adapting the tasks to reduce stress and providing opportunities to express feelings in a safe, supportive environment.</p> <p>Where potential impact is considered severe and affects large numbers of students in class support sessions may be appropriate. An EP may support this by offering advice or by co-facilitating the session.</p> <p><b>By Whom : Headteacher</b></p>
<p><b>Establish a procedure for informing parents / carers</b></p> <ul style="list-style-type: none"> <li>• By letter</li> <li>• In a meeting</li> </ul>	<p>Depending on the nature and timing of events parents may already be aware of the incident. An appropriate letter should be compiled to be sent home with pupils. It may be appropriate to involve outside agencies, such as the police, clergy or EPs. EPs can assist with the drafting of communication to parents or refer to examples for ideas of how to structure the information. Have your own school draft letter that can be adapted and personalised if required.</p> <p><b>By Whom : Headteacher / Office Staff</b></p>
<p><b>Arrange for staff to meet at the end of the day to debrief and plan for following day</b></p>	<p>Although already an emotionally exhausting day it is important for staff to meet for a short session at the end. This gives an opportunity for an update on any developments (including any specific concerns that have arisen), allows planning for next day and provides an opportunity to talk things through with others, offering emotional support, after a difficult day.</p> <p><b>By Whom : Headteacher / SLT</b></p>

### **Further Actions: Day 2 onwards**

<b>Action</b>	<b>By Whom Information &amp; Notes</b>
<b>Convene a meeting of Critical Incident Management Team to</b> <ul style="list-style-type: none"> <li>• consider any new developments</li> <li>• actions and events to date</li> <li>• plan for the day</li> <li>• identify tasks/ assign roles</li> </ul>	<p>Sometimes the first day appears quite calm as people may be in shock. Day 2 can present more issues as events begin to sink in so it is important to meet each day until the school returns to normal functioning.</p> <p><b>By Whom : Headteacher / SLT</b></p>
<b>Convene a meeting for staff to</b> <ul style="list-style-type: none"> <li>• update staff on any new developments inform staff of plans for day</li> <li>• give staff an opportunity to ask questions / raise concerns</li> </ul>	<p>In major critical incidents staff should be brought together at the start of the following day. As well as practical purposes this gives emotional support in difficult circumstances and allows a reminder that both staff and students may need some nurturing and time to talk. Plans should be made for subsequent meetings as required.</p> <p><b>By Whom : Headteacher / SLT</b></p>
<b>Continue to monitor and provide additional support to</b> <ul style="list-style-type: none"> <li>• vulnerable individuals previously identified</li> <li>• other students (or staff) causing concern</li> </ul>	<p>Following a Critical Incident a level of shock, anxiety and distress is normal, especially amongst those closest to the incident. Most people will have returned to normal functioning within six weeks. Further support may be required for individuals continuing to show significant signs of distress many weeks beyond this.</p> <p><b>By Whom : Headteacher / SLT</b></p>
<b>Liaise with affected family including</b> <ul style="list-style-type: none"> <li>• visits by staff or pupils to injured or bereaved</li> <li>• family's wishes and plans regarding funeral arrangements</li> <li>• return to school of bereaved</li> </ul>	<p>Contacts/visits should be planned/ made to anyone injured, either at home or in hospital, with cards and get well messages from staff and students. There may be possessions to be returned to the family and timing of this should be considered.</p> <p><b>By Whom : Headteacher</b></p>
<b>Begin to plan school response to memorial to include</b> <ul style="list-style-type: none"> <li>• the wishes of the family</li> <li>• active involvement of the peers and friends of the deceased</li> </ul>	<p>A lasting memorial and/or a ceremony give an important message about the value of the deceased; offers comfort to friends and family and may provide a sense of closure.</p> <p><b>By Whom : Headteacher</b></p>
<b>Make a note in the school calendar of important dates</b> <ul style="list-style-type: none"> <li>• anniversary of incident</li> <li>• birthday of deceased</li> <li>• inquests or court cases</li> <li>• events where the deceased would have a part</li> </ul>	<p>The anniversary of a Critical Incident can trigger emotional responses and the school may wish, in consultation with the family, to acknowledge and commemorate the date.</p> <p><b>By Whom : Office Staff</b></p>
<b>Review Critical Incident response and amend plan</b>	<p>Once the school has returned to normal functioning it is important to reflect on the response to the incident including what went well and what lessons can be learned. This can be used to evaluate and amend the Critical Incident Management Plan.</p> <p><b>By Whom : Headteacher / Governors</b></p>

Lost Property Form			
<b>Completed By</b>		<b>Incident</b>	
<b>Date</b>		<b>Time</b>	

No.	Name	Status (e.g. staff, pupil visitor)	Details of possessions lost/left behind	
			What	Where left/lost

Financial Expenditure Log			
Completed By		Incident	
Date		Time	

[illegible]

## CONTENTS OF EMERGENCY BOX / 'GRAB BAG'

Section	Details
Business Continuity	Business Continuity Plan (plus spare copies of forms in Appendices)
	Key contact details, including: Trustees, Parents/Carers, Local Authority, Suppliers etc
Organisational Information	Staff Handbook (policies and procedures)
	Other key documents
Financial Items	Bank, insurance details, Payroll etc
	Financial procedures
	A cheque book and spare credit card
	Assets Register and Insurance Policy
Staff Information	Staff contact details
	Staff emergency contact details
IT / Equipment Information	Software licence agreement and key codes
Equipment and other items	First Aid Kit
	Wind up LED torch
	Back-up tapes
	Stationery including permanent markers, clipboards, pens, blue-tack, pins, pencils and notebook paper
	Disposable camera with film
	Hazard barrier tape
	Contact details for taxi / transport providers
	School Floor Plans
	Spare keys
	Whistle / megaphones
	High visibility jacket



# IDENTIFYING, EVALUATING AND MANAGING RISKS

## GUIDANCE FOR COMPLETING THE RISK MATRIX:

LEGEND	
<b>I</b>	<b>Impact</b>
<b>P</b>	<b>Probability</b>
<b>I x P</b>	<b>Risk Rating</b>

To establish your risk rating, it is necessary to multiply the perceived consequence (or impact) of the risk (score 1 - 5) with the perceived likelihood (or probability) of that risk occurring (score 1-5). Please see tables below for guidance on risk rating scores.

### *Example School Risk Assessment (partially complete)*

	Risk Description	I	P	Risk Rating	Risk Control(s)	Additional Controls Required (if any)	Lead for Risk Control Activities
1.	Pandemic or epidemic e.g. influenza virus, meningitis	4	3	12	<ul style="list-style-type: none"> <li>Staff absenteeism policy</li> <li>Use of Supply Teachers</li> </ul>	Pre-prepared Teaching packs for Virtual Learning Environment	Headteacher
2.	Severe weather events e.g. high winds, snow, heat wave, drought	4	4	16	Implement the Business Continuity Plan – resulting in possible closure of school <ul style="list-style-type: none"> <li>Teacher2Parent</li> <li>ParentMail</li> </ul> Allows timely communication	Keeping up-to-date with forecasts, taking any necessary actions etc. gritting, boiler check, additional maintenance check of premises	Headteacher

	<b>Risk Description</b>	<b>I</b>	<b>P</b>	<b>Risk Rating</b>	<b>Risk Control(s)</b>	<b>Additional Controls Required (if any)</b>	<b>Lead for Risk Control Activities</b>
<b>3.</b>	Power outage	<b>5</b>	<b>2</b>	<b>10</b>	Regular servicing of equipment and installation. Maintaining statutory requirements	Checking national grid website for updates and further advice	Headteacher
<b>4.</b>	Utilities disruption e.g. gas, electricity or water supply	<b>5</b>	<b>2</b>	<b>10</b>	Regular servicing of equipment and installation. Maintaining statutory requirements	Checking supplier websites for updates and further advice	Headteacher
<b>5.</b>	Telephony failure	<b>3</b>	<b>3</b>	<b>9</b>	Reporting any possible faults		Headteacher
<b>6.</b>	Fire affecting the School premises	<b>5</b>	<b>1</b>	<b>5</b>	Fire Alarms checked weekly. Fire drills carried out half termly. Interserve inspect equipment bi-annually.		Headteacher
<b>7.</b>	Widespread or localised flooding	<b>5</b>	<b>1</b>	<b>5</b>	Sand bags on site. Hire of a water pump		Headteacher
<b>8.</b>	Mass staff absence e.g. industrial strikes, lottery syndicate	<b>5</b>	<b>1</b>	<b>5</b>	Not all staff in a union or the same union No known lottery syndicates		Headteacher
<b>9.</b>	Transport disruption	<b>1</b>	<b>1</b>	<b>1</b>	Most families are able to walk to school		Headteacher
<b>10.</b>	Violent extremist activity on School premises	<b>5</b>	<b>1</b>	<b>5</b>	School building secure at all times.	Keeping up-to-date on news reports	Headteacher
<b>11.</b>	Local hazards in the area e.g. School proximity to airport, railway line, tram line, motorways, industrial sites etc	<b>1</b>	<b>1</b>	<b>1</b>	Currently within a residential area. No hazards in the immediate area		Headteacher

	<b>Risk Description</b>	<b>I</b>	<b>P</b>	<b>Risk Rating</b>	<b>Risk Control(s)</b>	<b>Additional Controls Required (if any)</b>	<b>Lead for Risk Control Activities</b>
12.							
13.							
14.							
15.							

# Critical Incident Decision-Making Tool

Information	Issues	Ideas
<i>What do you know/what do you <b>not</b> know?</i>	<i>What are the problem/issues arising from that piece of information</i>	<i>What are the ideas for solving the issues/problems?</i>

# STAFF CONTACT LIST

## Staff Telephone Numbers

Title	Forename	Surname	Telephone Number
Mr	Christopher	Adkins	07474 787681
Mrs	Tracy	Bass	07928 677222
Mrs	Lisa	Baxter	07968 751117
Miss	Sarah	Camamile	07950 218151
Mrs	Beryl	Crockford	07999 887860
Mrs	Jennifer	Gardiner	07749 279483
Mrs	Emily	Godsmark	07508 917865
Mrs	Bridgette	Gough	07939 435931
Mrs	Irene	Jones	07748 218967
Mr	Simon	Larking	07739 352769
Mrs	Louise	Lucas	07876.303536
Miss	Imogen	Middleton	01787888058
Mrs	Sherrienne	McNamara	07931282368
Mr	John	Nichols	07545 305630
Mrs	Helen	Phillips	07713 256070
Mr	Djay	Bass	01376 514676
Mrs	Sue	Sharp	07966 396017
Mrs	Ruth	Ship	07747690757
Miss	Millie	Stanhope	07557 147598
Mrs	Emma	Stephens	07412 433963
Mr	Ben	Sutcliffe	07900 257899
Mr	Craig	Taylor	07834 719070
Miss	Brogan	Tyler	07979 040108
Mr	Neil	McNamara	XXXX

## KEY CONTACTS LIST

CONTACT	TELEPHONE NUMBER
<b>School Contacts</b>	
Chair of Trustees	07788218046
Vice Chair of Trustees	
Trustee	
Trustee	
Trustee	
Trustee	
Trustee	
Trustee	
Trustee	
<b>Key Local Authority Contacts</b>	
Communications Team	
Emergency Duty Service (EDS)	
<b>Other Local Authority Contacts</b>	
ECC General Enquiries	
ECC Press Officer	0333 013 280 (out of hours 07717 867525)
ECC Insurance Service (Buildings insurance)	
ECC Health & Safety Advice	
ECC Educational Visits	
ECC Schools Finance Support	0333013 9832
<b>Other Local Contacts</b>	
BBC Essex Reception	01245 616000
Radio Essex	01245 616047
Evening Echo	01268 469281
<b>Other Useful Contacts</b>	
Foreign Office	020 7008 1500
Capita Education Services	020 7799 1525
Education Funding Agency (E.F.A)	0370 000 2288

<b><u>TYPE OF CONTRACT</u></b>	<b><u>SUPPLIER</u></b>
<b><u>HEALTH &amp; SAFETY</u></b>  Fire Extinguishers Fire Alarm Water Treatment Pest Control  PE Equipment-indoor Asbestos Register PAT Testing 5 year Electrical Test Gas Certificate Kiln Service Outdoor PE Equip Stairlift	The Fire Extinguisher Man XGS Primec Pest Defence  Sport Safe  N/A  Essex Kilns Limited Sport Safe Stannah
<b><u>REPAIRS &amp; MAINTENANCE</u></b>  - Boiler Service	SES Mechanical Ltd
<b><u>CLEANING</u></b>  Refuse Collection Sanitary Bins Roller Towels Water Boiler descale	CSH PHS Berendsen Angel Springs Rented
<b><u>GROUND'S UPKEEP</u></b>  Grounds Contract	Ace of Spades
<b><u>CATERING</u></b>  Deep Clean	J&J Contract Cleaning Ltd

Meals Contract	TCS
Equipment maintenance	Ambit Catering Ltd
Pest Control	Pest Defence
-	
<b><u>ICT</u></b>	
ICT Contract	NEMAT
Broadband	EXA Networks
Software Licences	Capita - SIMS
Website Maintenance	Exubra
SIMS Support	Capita - SIMS
Microsoft Licences	Frugal IT
<b><u>OFFICE EXPENSES</u></b>	
Online payments system	Parentmail
Finance software licence	PSF
<b><u>REPROGRAPHICS</u></b>	
-	
Copy costs	IPT
<b><u>PROFESSIONAL FEES (CURRICULUM)</u></b>	
-	
Target Tracker	Essex County Council
Piano Tuning	R Joslin Piano Restoration
EVOLVE (Ed Visits)	Essex County Council
Espresso	Discovery Education
School Games	The Ramsey Academy
<b><u>PROFESSIONAL FEES (NON CURRICULUM)</u></b>	
Payroll	Essex County Council



HR	Juniper Education
HR Personnel Contract disc	Juniper Education
Legal services	Essex County Council
H & S	
Finance Support	Juniper Education
ICE	Juniper Education
TV Licence	TV Licencing
Data Protection Licence	ICO
Jobscene / website	Essex County Council
ECC FSM service	Southend Borough Council
Audit Fees (Academies only)	MWS Accountants
Accountants fees	As Above
ECC Admissions (Academies only)	ECC
Mileage	ECC
<b><u>OTHER INSURANCE</u></b>	
Contents / Employee Liability	RPA - DfE
Engineering Inspection	Zurich Municipal
<b><u>OTHER EMPLOYEES EXPENSES</u></b>	
Staff Insurance: Teachers	SAS
Staff Insurance: LSA/ Admin/ Premises / Cook	SAS
Occupational Health	Essex County Council